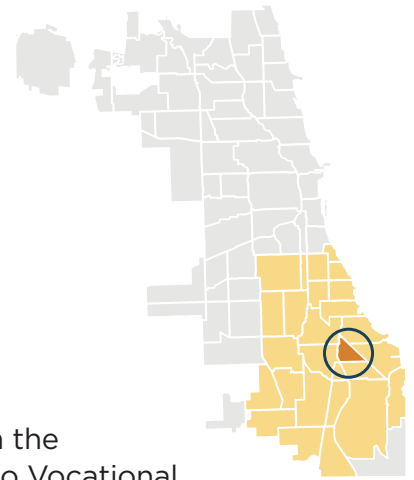


Avalon Park



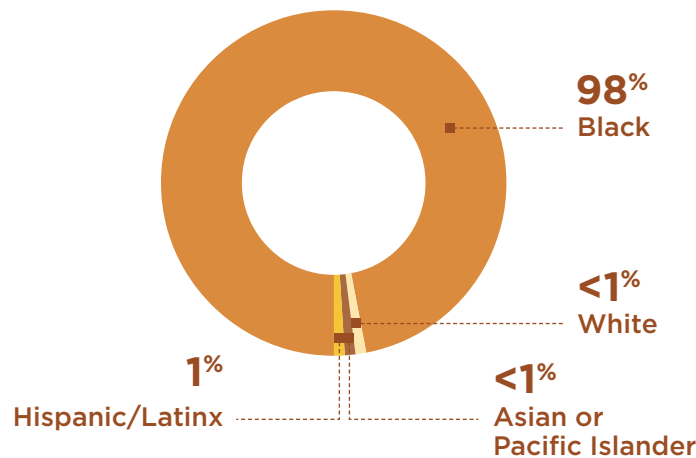
Chicago Vocational High School



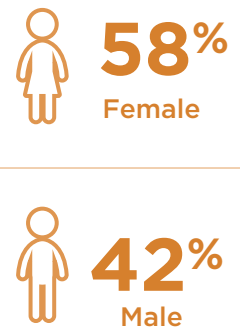
Avalon Park is named after a large park located in the community. A key asset in this community, Chicago Vocational High School brings students from all over the city to this area.

Who lives here?¹

Race and Ethnicity



Sex



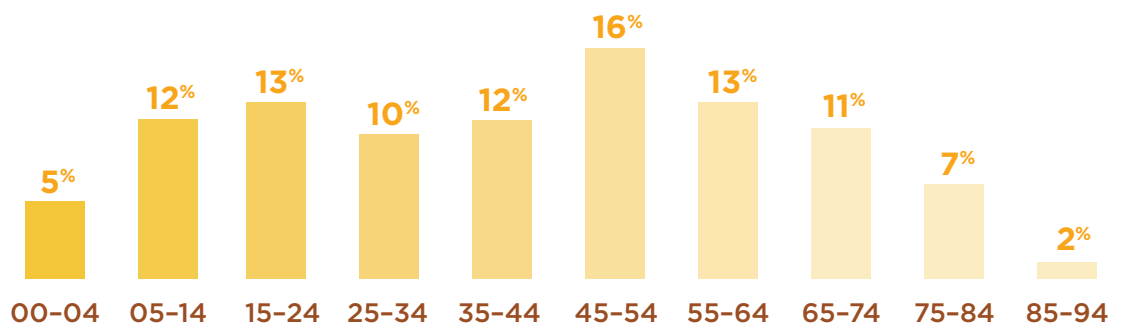
Population:
9,840

Population change:²

↓ **3%**

Chicago: ↑6%

Age



Social Determinants of Health¹

Social determinants of health are social, economic, and physical conditions in which people are born, live, and work that affect health and well-being. For example, where you live can limit access to healthy foods, this can in turn increase one's risk for obesity and other chronic conditions related to diet.

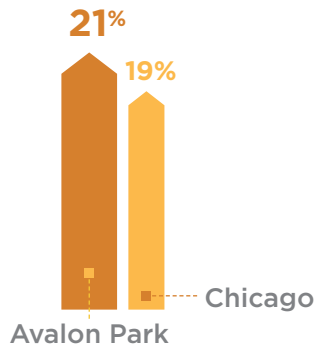
Economic Factors

Median household income

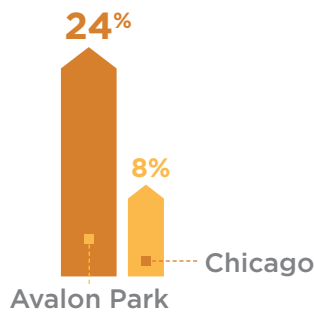
\$37,208

Chicago: \$53,006

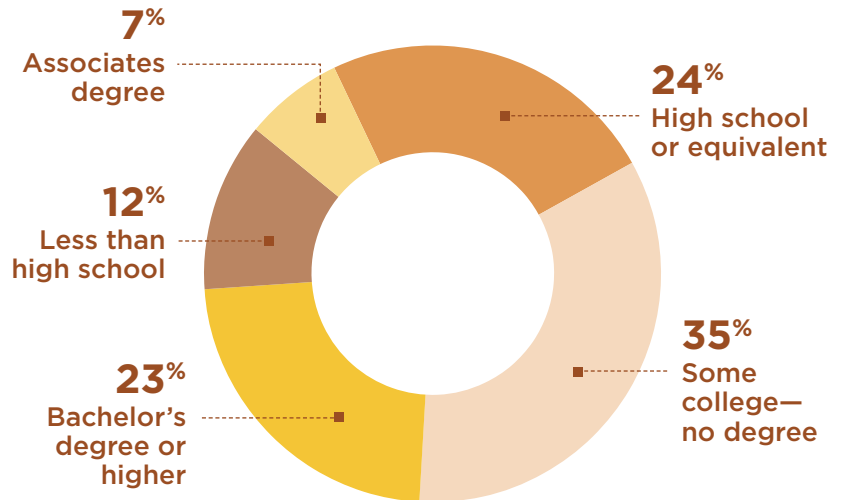
Population living in poverty³



Unemployment



Education⁴



43%

of households spend **30%** or more of their annual income on housing costs



1 in 5

children are living in poverty³



29% of households are receiving food stamps

36% of households are at risk for food insecurity⁵

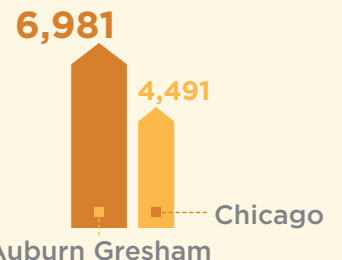
Physical Factors



58%

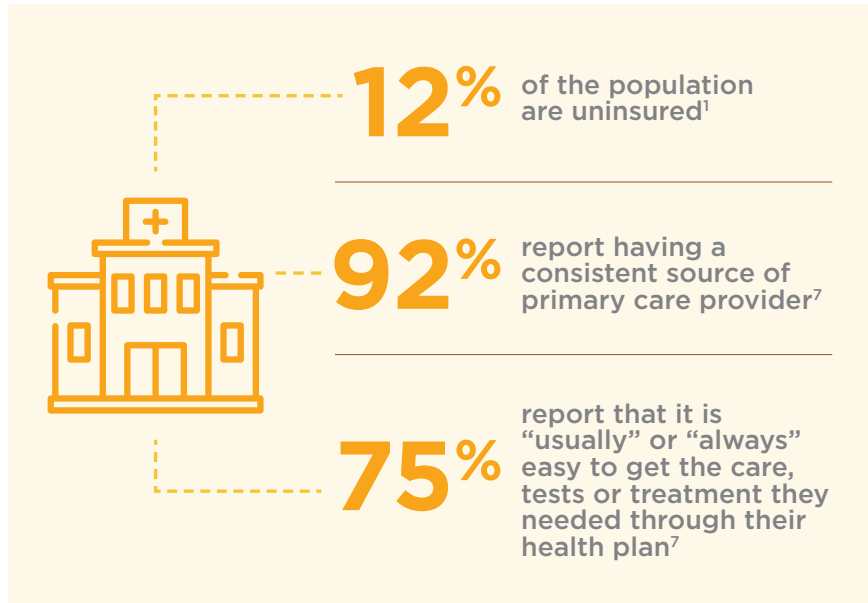
of adults report that they feel safe in their neighborhood "most or all of the time"⁶

Violent crime incidents⁶ Per 100,000 Population



Access to Care

Access to quality health care services is important for preventing and managing diseases and achieving health equity. High cost of care, inadequate insurance coverage, and lack of availability of quality services generally lead to barriers in clinical care.



51%

of pregnant women received early and adequate prenatal care⁸



65%

report receiving colorectal cancer screening⁷

Health Behaviors⁷

Health behaviors are individual actions we take to prevent illnesses or maintain good health such as exercising and eating a balanced diet. Health behavior is greatly influenced by the social and economic conditions in which people live. For example, it is difficult to walk in the neighborhood to get exercise when you do not feel safe.



40%

report not participating in any physical activity or exercise in the past month



60%

report drinking soda or sweetened drinks everyday



35%

report being a smoker



8% report eating five or more servings of fruits and vegetables daily

Health Outcomes⁹

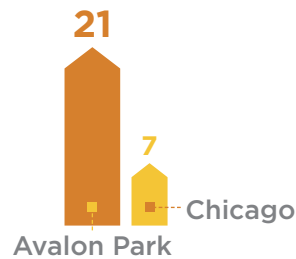
Health outcomes are the measures that define the health and wellbeing of the community. Health outcomes are a result of social determinants of health, access to clinical care, and health behaviors.

Top Causes of Death

1. Heart Disease
2. Cancer
3. Injury
4. Diabetes-related
5. Stroke

Infant Mortality

Deaths per 1,000 live births



Life Expectancy at Birth

75 years

Chicago: **77 years**
The Loop: **82 years**

Disease Burden Among Adults⁷



44%
have high blood pressure

56%
are obese

15%
are diabetic

11%
have asthma

Community Resources¹⁰

Community resources are necessary to achieve good health outcomes. A sample of the community resources necessary for optimal health outcomes and available in Avalon Park are listed below. For a full list of all resources and their location, visit the Chicago Health Atlas at <https://www.chicagohealthatlas.org/resources>



6
Schools



1
Fitness Facilities



6
Hospital and Health Services



0
Community Gardens



16
Faith Based Organizations



2
Social Service Organizations



2
Grocery Stores



2
Pharmacies



3
Public Parks¹¹

Data presented in the profile are part of UChicago Medicine's Community Health Needs Assessment (CHNA). Data for the CHNA were extracted by the Alliance for Health Equity or the Chicago Department of Public Health. For Full listing of all data sources refer to the CHNA at uchicagomedicine.org/community-health. **1:** American Communities Survey 2012-2016 estimates; **2:** Estimated percent change from 2010 Census to the American Communities Survey 2016 5 year estimates; **3:** Under 100% of the Federal Poverty Level. The percentages for children living in poverty are rounded to a nearest fraction when possible to make this data user-friendly; **4:** CMAP 2012-2016 5-year estimates. Education level for population age 25 and over; **5:** Households under 185% of the Federal Poverty Level are considered at risk for food insecurity; **6:** Chicago Police Department; **7:** Healthy Chicago survey; **8:** Illinois Department of Public Health Vital Stats; **9:** Chicago Department of Public Health, Illinois Department of Public Health Vital Stats; **10:** MapsCorps 2017 Community asset dataset; **11:** Chicago Parks District